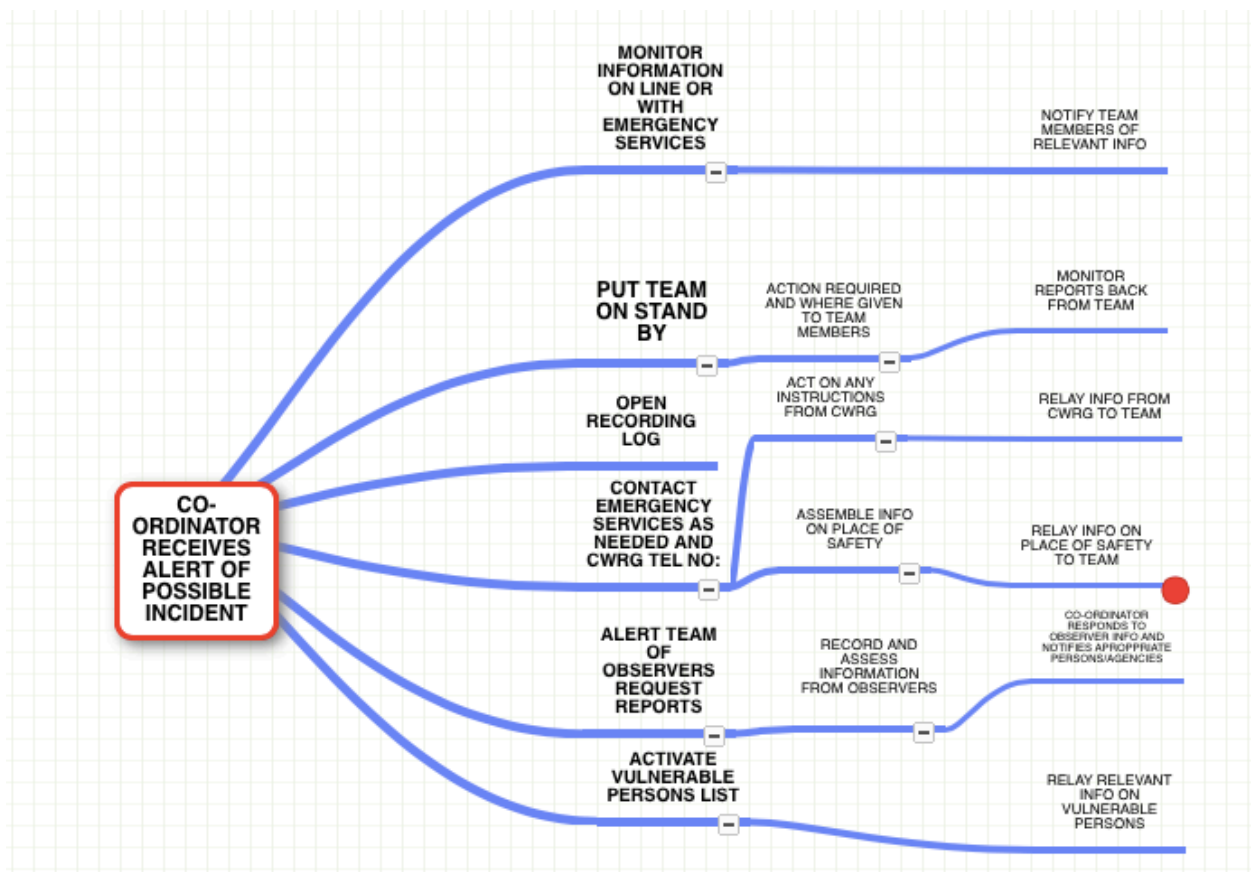


This is the system adopted by the council to respond when needed.



1. 01.03.18: volunteer Tem put on Standby and Stood down 07.03.18.
2. On Call Received from an outlying Farm where couple were unable to leave their premises down a half mile drive to the road for a hospital appointment. Pu them in touch with a local famer who was able to help.
3. No other calls were received.
4. Recommend to purchase of three more grit bins for Station Road. One by memorial Hall, another by Steep path to Chestnut Drive and the third at the junction of Brookend Drive and New Road. Cost £300.