



Town & Parish Reference Group

October 2022

COUNTY HIGHWAYS

SHAIL CHOCHAN – SERVICE MANAGER, COUNTY HIGHWAYS

Contents

- Defects – what are they, how to report, what we do
- Gritting
- Lengthsman Scheme

Defect - definition

- Anything and everything!
 - Potholes
 - Blocked gullies
 - Damaged signs
 - Broken kerbs
- Generally small scale works to repair isolated problem
- Does not mean we will take action



- **Defects - identification**

- How defects are identified

Safety Inspections

- Periodic survey of all roads
- Trained

Officers

- Ad hoc inspections

Members

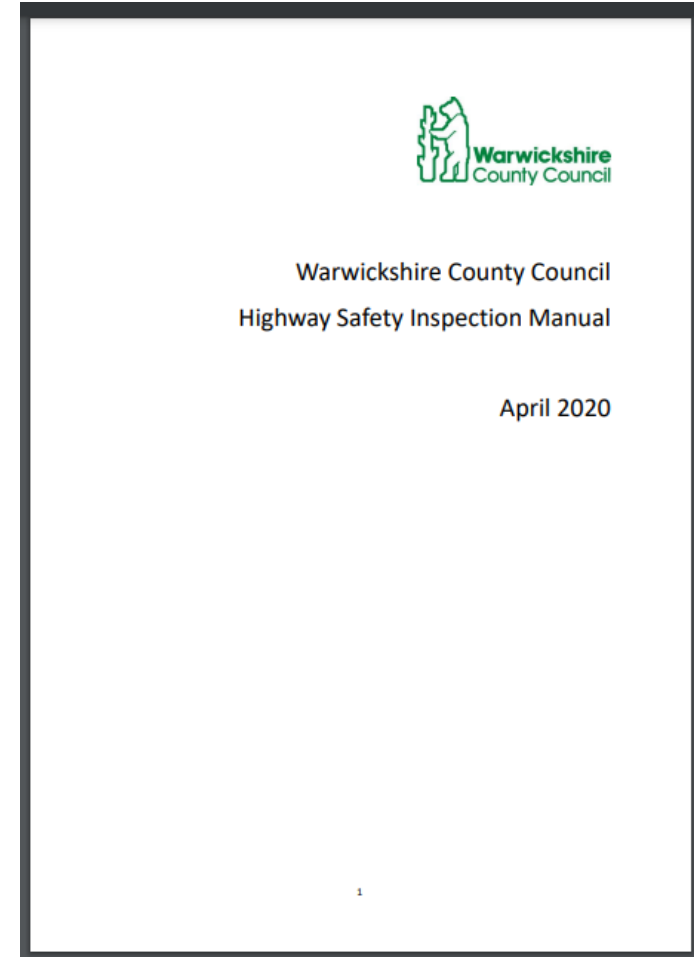
- Residents

Public

- Online
- Phonecall
- Via T&P or Member

Defects - Safety Inspections

- Code of practice for Well Managed Highways and Infrastructure
 - Takes a risk based approach to highway maintenance.
- Statutory duty
- Section 58 defence



Defects - Safety Inspections

Risk

- Risk Based Approach



Hierarchy

Carriageways	Footways
Strategic Route	Prestige Walking Zones
Main Distributor	Primary Walking Routes
Secondary Distributor	Secondary Walking Routes
Link Road	Link Footways
Local Access Road	Local Access Footways
Minor Roads	

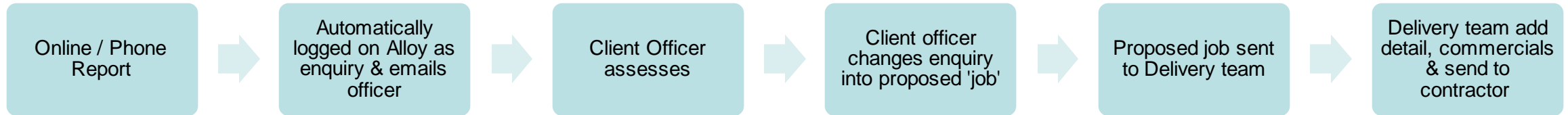
Defects – Risk Assessment

Category	Inspection Frequency
Strategic Route	Monthly
Main Distributor	4 times / year
Secondary Distributor	3 times / year
Link Road	2 times / year
Local access road	1 time / year
Minor Road	1 time / year
Prestige Walking	Monthly
Primary Walking	Monthly

		Probability/Likelihood of Interaction with Road User				
		Negligible	Low	Noticeable	High	Almost Certain
IMPACT	Negligible	1	2	3	4	5
	Low	2	4	6	8	10
	Moderate	3	6	9	12	15
	High	4	8	12	16	20
	Very High	5	10	15	20	25

Response Category	Colour/Score	Response
Category E	Within 2 hours (25)	Attend within 2 hours and subsequently make safe or permanently repair.
Category 1	Next working day (16-20)	Attend before the end of the next working day and make safe or permanently repair.
Category 2H	5 working days (10-15)	Attend within 5 working days and make safe or permanently repair.
Category 2L	30 days (6-10)	Attend within 30 days and make safe or permanently repair.
No Action	No Action (1-5)	No action

Defect – Process for third party repots



Warwickshire County Council

Search (eg. libraries, blue badge, potholes)

Map legend

- Report received and will be looked at by our Highways Team
- A report has been registered as a defect
- Defect has been scheduled for maintenance
- A reported defect is a duplicate of an existing defect
- Report has been resolved
- Report does not meet our eligibility criteria
- Report has been referred to responsible owner/organisation

Zoom in closer so you can accurately locate the problem

Search E.G Ryton on Dunsmore

Map Satellite

ALLOY

Activities: 68,400

Open Jobs: 68,400

Closed Today: 48

Admin/Techn...: 3

North: 3

South: 14

Budgets: 150

Budgets: 150

Budget periods: 149

Delivery North: 0

24hr/5Day jobs to issue: 0

All jobs to issue: 25

Inspections Open: 8

Delivery Inspections To Do: 1,037

Delivery South: 0

24Hr/5Day jobs to issue: 0

All jobs to issue: 36

Inspections open: 96

Delivery Inspections To Do: 76

Map showing Coventry area with markers 1, 2, 3, 4, 5, 6, 7, 8.

Defect Reporting

How to report a defect:

- Online at www.warwickshire.gov.uk/reportit
- Via phone 01926 412525

How to contact us about other highway issues / questions:

- Email: chnorth@warwickshire.gov.uk or chsouth@warwickshire.gov.uk

Defects - Performance & resourcing

Type	Volume	Performance
Emergencies (2Hr)	150 / month	99 – 100% on time
Other defects (1day, 5 day, 30 day)	600 / month	98 – 100% on time
Streelighting	230 / month	98 – 100% on time

Balfour Beatty Gang structure

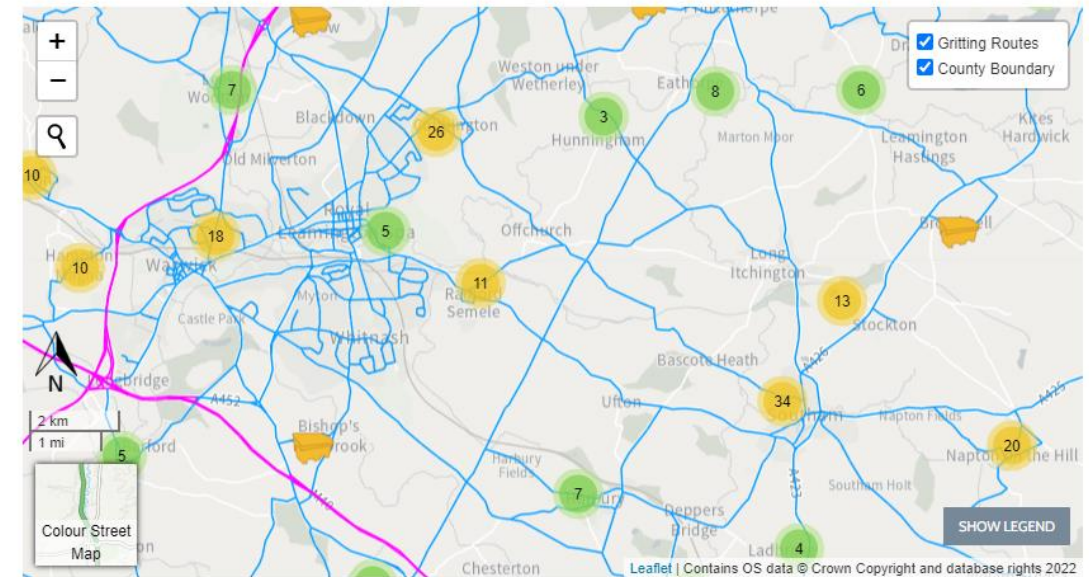
North	3 Gangs	
South	3 Gangs	
Out of hours	2 Gangs	

Winter gritting



- 29 gritting routes
- 46% of network covered each time we grit
- Work on average 60 grits / year
- Metdesk / Vaisala / Training

Our gritting policy



Winter gritting - vehicles

- 31 vehicles + loaders
- In cab technology
- Live tracking



Winter gritting - Depots

- Gritting from following depots:
 - Coleshill
 - Budbrook
 - Henley
 - Wellesbourne



Winter gritting – Making the call

- Go / No go call:
 - Trained staff
 - Bespoke weather forecasting
 - Ice stations
- Twitter

2 to 5 Day Summary for Warwickshire County Council

Forecast Issued:	10th October 2022 11:45:55 BST	Forecaster:	Lauren Herdman
Forecast Period:	Tuesday 11/10/22 12:00 to Saturday 15/10/22 12:00	Forecaster DDT:	01296 628373

5 Day Headline	RSTS ABOVE ZERO THROUGHOUT
General Synopsis	<p>TUESDAY: Dry with bright spells tomorrow afternoon. Dry overnight with clear spells. RSTs well above zero.</p> <p>WEDNESDAY: A dry, bright morning but light rain during the afternoon. Clear intervals overnight with just the small risk of a light shower. RSTs well above zero.</p> <p>THURSDAY: A dry morning but light showers developing during the afternoon. Evening rain turning more showery during the night. RSTs well above zero.</p> <p>FRIDAY: A dry day with plenty of sunshine. Clear periods overnight. Just the small risk of a light shower. RSTs well above zero.</p>

Forecast Hazards and Temperatures									
	Readiness Colour	Min RST	Min Air	Ice	Hoar Frost	Snow	Heavy Rain	Fog	Confidence
Tue 12:00 - Wed 12:00	GREEN	PS 5.1	PS 5.5	N	N	N	N	N	HIGH
Wed 12:00 - Thu 12:00	GREEN	PS 5.0	PS 5.1	N	N	N	N	N	HIGH
Thu 12:00 - Fri 12:00	GREEN	PS 8.6	PS 10.5	N	N	N	N	N	HIGH
Fri 12:00 - Sat 12:00	GREEN	PS 5.7	PS 7.0	N	N	N	Y	N	HIGH

6-10 Day Outlook
<p>SATURDAY: Showers or longer spells of rain, but some clearer breaks too. RSTs are expected to remain well above zero.</p> <p>SUNDAY, MONDAY & TUESDAY: A showery period of weather, but some clearer breaks in between, with varying amounts of cloud. RSTs currently forecast to stay well above zero throughout.</p>

Winter gritting – Grit Bins



- Over 1200 in Warwickshire
- Refilled in September / October
- Refilled during season

- How to get a grit bin
 - Parish councils, Town councils, and residents associations can apply for a grit bin.
 - Location will be assessed by WCC Highways
 - Cost of bin borne by requestor
 - County Highways will refill free of charge

Parish Lengthsman scheme

- Locally employed person to carry out highway maintenance tasks.
- Can also report issues to County Highways
- Managed by Parish / Town council

Parish Lengthsman scheme

Brush any leaves or debris from grates



Report to county highways



Clear debris and recut grips



Clear headwalls



Parish Lengthsman scheme

Advise landowners and frontagers when their ditches need cleaning



In especially difficult circumstances clear ditches- only with prior agreement of the Highway Manager or their representative



Remove vegetation obscuring signs



Maintain visibility splays at junctions



Parish Lengthsman scheme

Report noxious
weeds to County
Highways



Side out footways



Advice to
homeowners on
obstructions



Parish Lengthsman scheme

Removal of illegal signage & flyposting



Painting street furniture



Minor pothole repairs



Parish Lengthsman scheme – how to...

- The parties

Contracts	Hiring	Payments	Training & equipment	Work allocation
WCC & Parish setting out broad terms of engagement	Parish council – either employment contract or service supply contract	Parish Council (fees, costs, materials)	Provided by WCC & Balfour Beatty	Parish Council

- Who to contact: County Highways Policy team at chpolicy@warwickshire.gov.uk

Thank you for your time

- Repot highway defects:
 - www.warwickshire.gov.uk/reportit
- Follow us on Twitter
 - @WarksHighways
- General enquires:
 - CHsouth@warwickshire.gov.uk
 - CHnorth@warwickshire.gov.uk
- Me:
 - Shailchohan@warwickshire.gov.uk
- Safety Inspection Manual link:
 - <https://api.warwickshire.gov.uk/documents/WCCC-899-503>